

- Notes:**
- 1) No Neutral or Live looping on terminals.
  - 2) Analog input for use by the BMS.
  - 3) Room unoccupied (open contact), places controller in unoccupied mode.  
(Bridge 10/11 if not in use and AV 36 Mode Value = 0)
  - 4) Discharge air temp. is measured for report back on the BMS (Optional). Heating or cooling mode is supplied by the BMS.
  - 5) If the return air temperature sensor is not installed room temperature is measured at the wall unit.

**References:** MM2Q71 (controller doc.), MK2Q11 (wall unit doc.) and MM2BACQ12 (BACnet doc.)



**MM2BA70A fan coil controller**

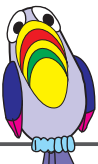
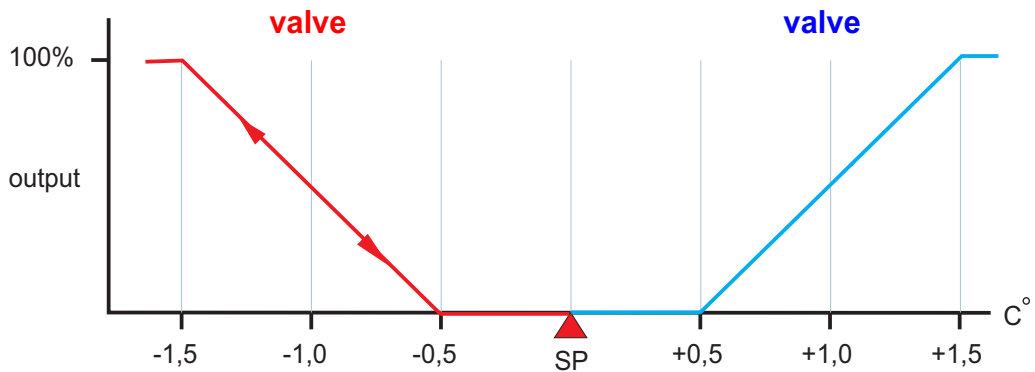
BMS	BACnet	01/02/03
Wall unit	MK2A25 with temp.sensor	04/05
Temp 1	Return air. Optional (will be dominant)	06/07
Temp 2	Supply water temp. for configurations B, C and D	08/09
Input 1	Sensor input. Voltage free contact.	10/11
Power out	24V DC to power occupancy sensor	12
Input 2	12V DC. Unit switches off when high	13/14
Analog out	Fan 0-10V control	15/16
Power out	24V DC output for sensor use	17
Analog out	Cooling valve 0-10V control	18/19
Analog out	Heating valve 0-10V control	20/21
Power in	230V AC	C/D

**Note:**

Sensor input to terminals 10/11 must be a voltage free contact.  
24V DC available to power sensor.

Occupancy input (AV 36 Mode = 0) closed = room occupied.  
Fan only (AV 36 Mode = 1) closed = fan only. No heating or cooling.  
On/Off (AV 36 Mode = 2) closed = unit switches off.  
Heater interlock (AV 36 Mode = 3) open = no heating.  
Humidistat input (AV 36 Mode = 4) closed = unit does de-humidification.

BACnet doc: MM2BACQ12



**DEMAN**

**MMB2A70A fan coil controller**